



# FREESTANDING RESTAURANT AVAILABLE

For Sale or Lease | 14870 S. Harrison Street, Olathe, KS



## 5,772 SF FREESTANDING BUILDING ON 1.79 ACRES

### SALE PRICE: \$1,500,000 | LEASE RATE: \$21/SF NNN

#### DEMOGRAPHICS

	1 mile	3 miles	5 miles
Estimated Population	1,197	66,903	142,231
Avg. Household Income	\$96,839	\$94,244	\$107,038

- Great freestanding restaurant location w/ full kitchen & bar
- Tremendous daytime population (37,391 employees within a 3 miles)
- Excellent visibility and access to K-7 Highway
- Prime front pad of planned Garmin expansion
- Adjacent to Olathe Medical Center, currently under going a \$100 million expansion
- Prime Johnson County location
- Garmin International Headquarters less than two miles away (3,500 employees)
- Join Chili's, Taco Bell, and 54th Street Bar & Grill, and more

For More Information Contact:

MARK MCCONAHAY | 816.412.7386 | [mmcconahay@blockandco.com](mailto:mmcconahay@blockandco.com)

DAVID BLOCK | 816.412.7400 | [dblock@blockandco.com](mailto:dblock@blockandco.com)

Exclusive Agents

 [CLICK HERE TO VIEW MORE LISTING INFORMATION](#)



All information furnished regarding property for sale or lease is from sources deemed reliable, but no warranty or representation is made as to the accuracy thereof and the same is subject to errors, omissions, changes of prices, rental or other conditions, prior sale or lease or withdrawal without notice.

PHOTOS



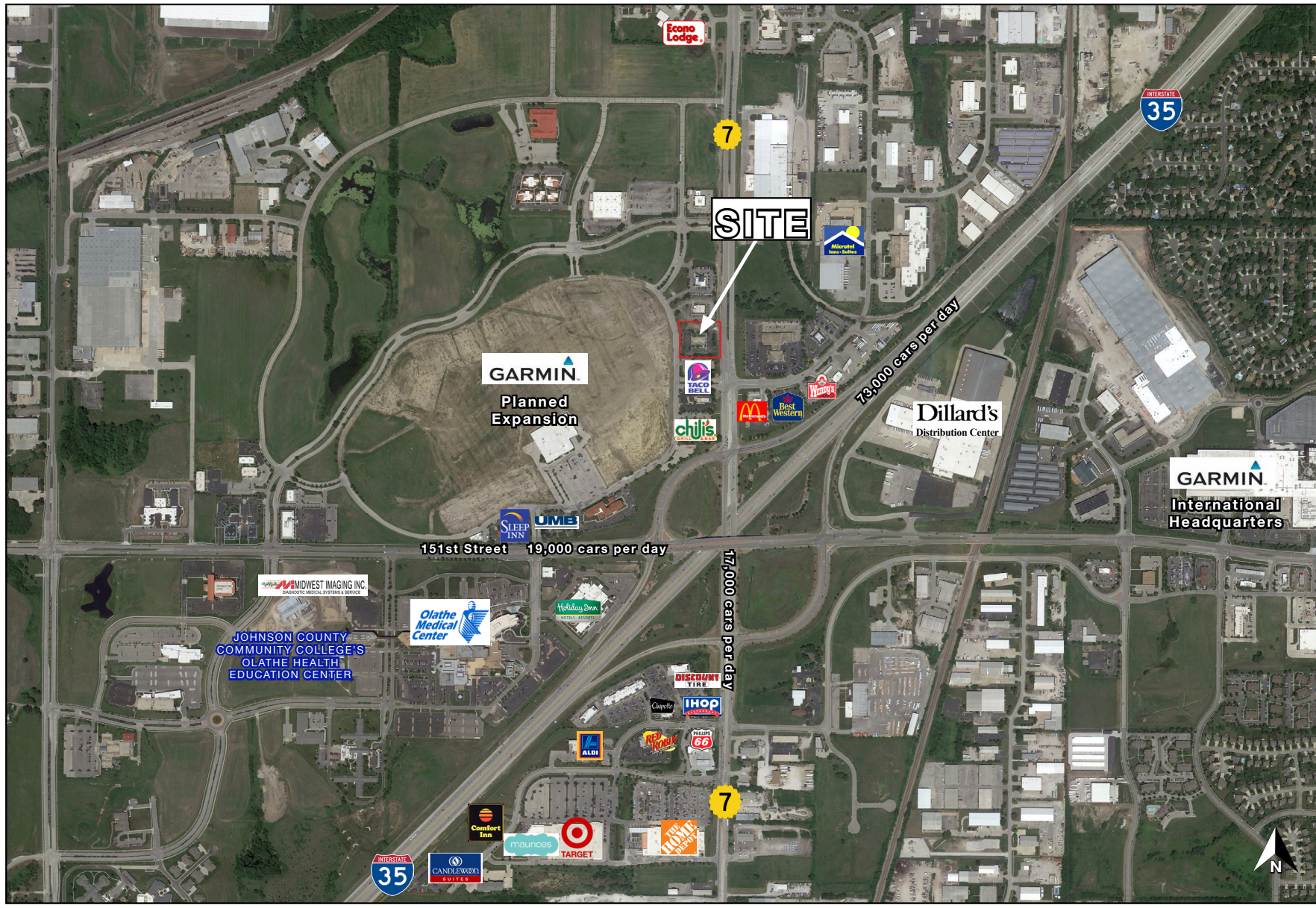




# FREESTANDING RESTAURANT AVAILABLE

For Sale or Lease | 14870 S. Harrison Street, Olathe, KS

AERIAL



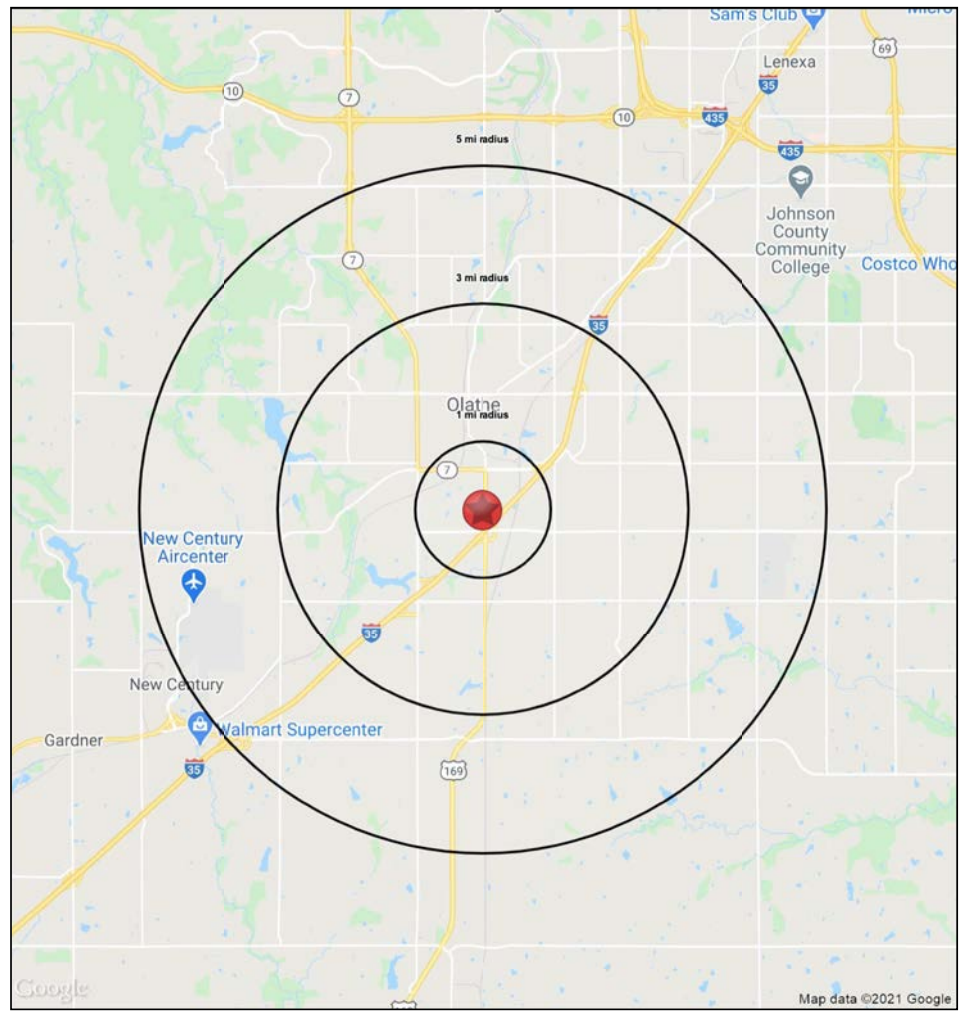
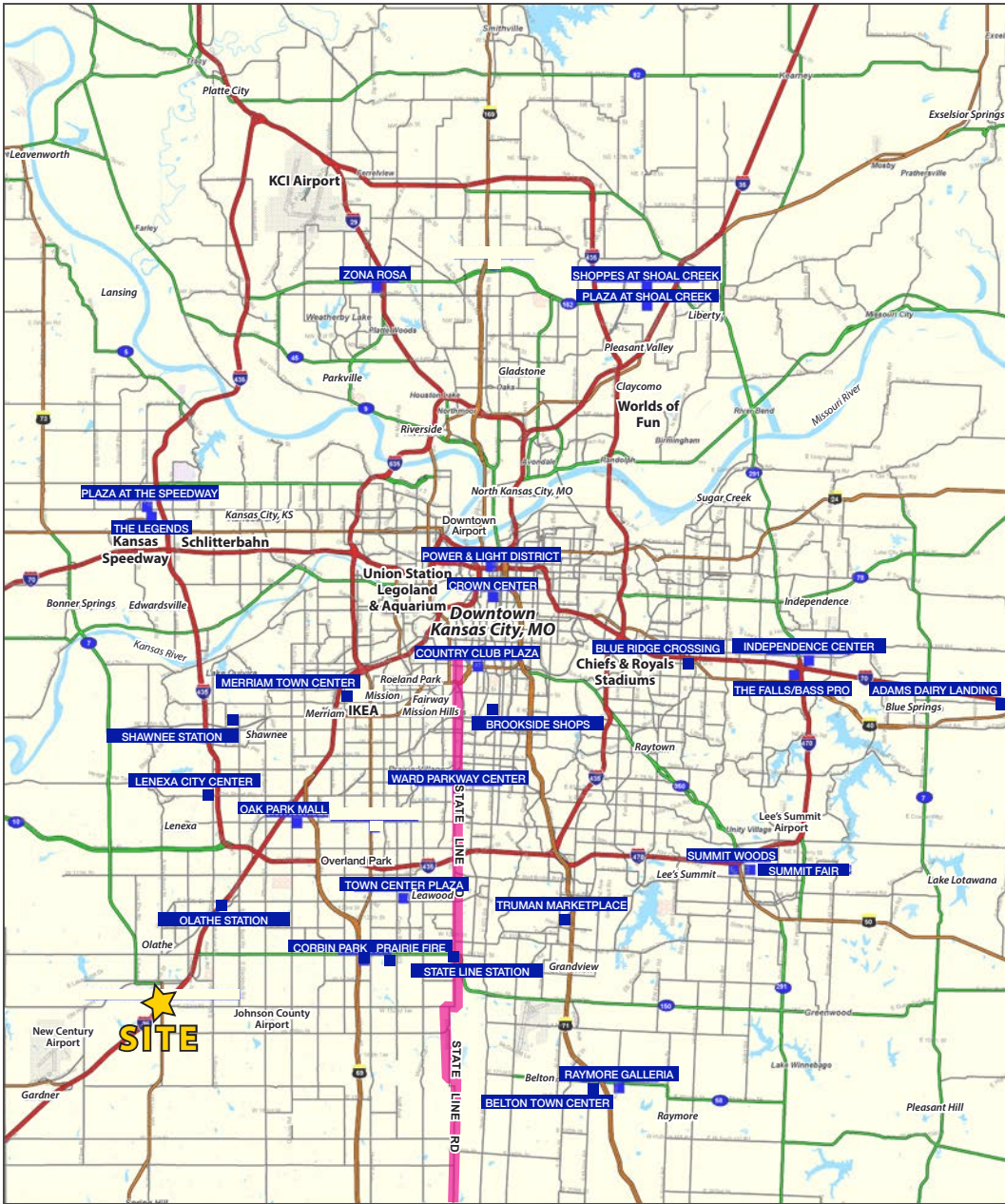
All information furnished regarding property for sale or lease is from sources deemed reliable, but no warranty or representation is made as to the accuracy thereof and the same is subject to errors, omissions, changes of prices, rental or other conditions, prior sale or lease or withdrawal without notice.





# FREESTANDING RESTAURANT AVAILABLE

For Sale or Lease | 14870 S. Harrison Street, Olathe, KS



Block & Company, Inc., Realtors | 605 W. 47th Street, Ste. 200, Kansas City, MO 64112 | 816.753.6000 | www.blockandco.com



All information furnished regarding property for sale or lease is from sources deemed reliable, but no warranty or representation is made as to the accuracy thereof and the same is subject to errors, omissions, changes of prices, rental or other conditions, prior sale or lease or withdrawal without notice.



# FREESTANDING RESTAURANT AVAILABLE

For Sale or Lease | 14870 S. Harrison Street, Olathe, KS

151st Street & I-35 Olathe, KS	1 mi radius	3 mi radius	5 mi radius
<b>Population</b>			
2021 Estimated Population	1,997	66,903	142,231
2026 Projected Population	2,026	68,435	148,299
2010 Census Population	1,890	62,495	123,619
2000 Census Population	1,234	52,731	92,269
Projected Annual Growth 2021 to 2026	0.3%	0.5%	0.9%
Historical Annual Growth 2000 to 2021	2.9%	1.3%	2.6%
2021 Median Age	39.7	34.2	34.4
<b>Households</b>			
2021 Estimated Households	800	23,741	50,674
2026 Projected Households	829	24,978	54,348
2010 Census Households	728	21,615	42,914
2000 Census Households	380	18,119	31,891
Projected Annual Growth 2021 to 2026	0.7%	1.0%	1.5%
Historical Annual Growth 2000 to 2021	5.3%	1.5%	2.8%
<b>Race and Ethnicity</b>			
2021 Estimated White	80.7%	80.3%	80.7%
2021 Estimated Black or African American	5.4%	5.6%	5.8%
2021 Estimated Asian or Pacific Islander	7.8%	4.3%	5.4%
2021 Estimated American Indian or Native Alaskan	0.5%	0.5%	0.4%
2021 Estimated Other Races	5.5%	9.3%	7.7%
2021 Estimated Hispanic	8.8%	14.1%	11.3%
<b>Income</b>			
2021 Estimated Average Household Income	\$96,839	\$94,244	\$107,038
2021 Estimated Median Household Income	\$74,165	\$85,142	\$97,765
2021 Estimated Per Capita Income	\$39,238	\$33,562	\$38,278
<b>Education (Age 25+)</b>			
2021 Estimated Elementary (Grade Level 0 to 8)	1.6%	3.7%	2.8%
2021 Estimated Some High School (Grade Level 9 to 11)	5.5%	4.4%	3.4%
2021 Estimated High School Graduate	24.4%	19.6%	16.7%
2021 Estimated Some College	18.8%	20.7%	19.2%
2021 Estimated Associates Degree Only	9.2%	8.8%	8.4%
2021 Estimated Bachelors Degree Only	23.0%	28.2%	32.5%
2021 Estimated Graduate Degree	17.5%	14.7%	17.1%
<b>Business</b>			
2021 Estimated Total Businesses	459	2,246	3,588
2021 Estimated Total Employees	8,432	30,403	51,092
2021 Estimated Employee Population per Business	18.4	13.5	14.2
2021 Estimated Residential Population per Business	4.4	29.8	39.6

©2021, Sites USA, Chandler, Arizona, 480-491-1112 Demographic Source: Applied Geographic Solutions 5/2021, TIGER Geography - RS1

